

# PLA2611

## Self-powered / bi-amplified Line Array module



The PROPHON PLA2611 is a self-powered, lightweight, compact line array module with on-board DSP, for use either in a full-scale line array, as a frontfill, as a delaysystem or as a high-power, portable PA-system mounted / stacked on any of our subwoofers with the proper rigging hardware. Due to its compact size and low weight, the PLA2611 can be mistaken for a line array module used in smaller applications, this is easy to remedy by listening and experiencing the full power of the PLA2611.

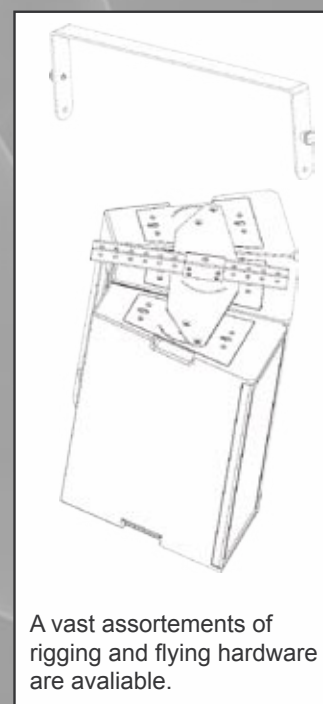
Developed to satisfy the ever growing demand in the rental and installation segment where one speaker cannot only have one application and user area! As with our Multi Purpose Speaker Series, the PLA2611 have a variety of applications, making it one of the most interesting line array module out there!

### Features

- Compact format.
- 2 x 6" woofers mounted on two separate 110° baffles.
- 1 x 1" driver mounted on a Waveguide.
- Self-powered with built-in amplifier and a total of 700W.
- Controlled dispersion of H110° x V15°.
- Flat frequency response with low distortion and high SPL.
- On-board DSP processing.
- 4 presets for easy setup.
- A variety of hardware, installation-brackets and mounting equipment.
- Can be used as a fullrange line array with -3dB / doubling of distance
- Coherent wavefront where the frequency response and frequency reproduction are the same over the dispersion area.

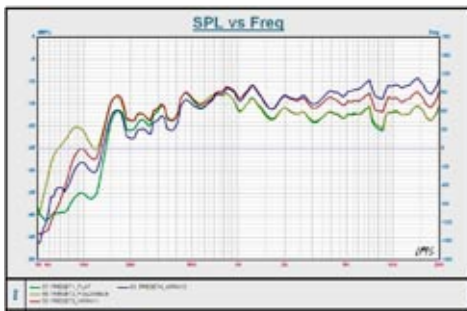
### Applications

- Small sized line array for use in live applications speech and recorded music such as concerts, festivals, Club performances and events.
- Either flown or groundstacked, with the smart and easy to use rigging hardware.
- Installed horizontally in small clusters where dispersion are paramount.
- Installed in venues, theatres, churches and other indoor facilities.
- The perfect frontfill, placed at the front of the stage, taking only 215 mm. of height..
- Sidefill, groundstacked on any of our subwoofers prepared for line array stacking.
- Small sized high power PA with 2-4 pcs. mounted on a stand with subwoofer, for use in live application and recorded music, such as bands, DJ's, Events
- as delaysystem / delaytower in larger venues.
- installed 2-4 pcs / cluster vertically in nightclubs, live performance stages, bars and lounges etc. with a very controlled dispersion of H110° x V15° - H110° x V60° (1 - 4 pcs of PLA2611)

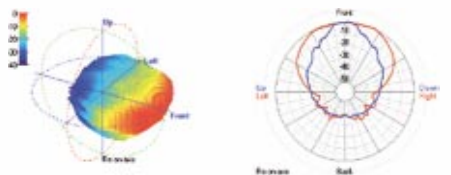


Frequency response on the 4 different presets, for selecting, depending on configuration

1. Flat through
2. Extended Fullrange
3. Array 1
4. Array2



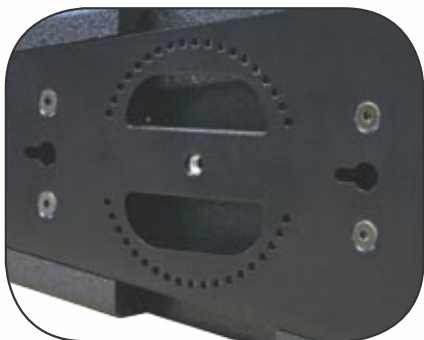
CLF files available for downloading and using in any 3D-CAD program supporting CLF format



Only the best components available have been used, whether it be drivers, woofers or amplifiers & DSP's.



The specially designed hardware allows the PLA2611 to be used in a variety of ways and combinations, either when installing or using "on the road"



## Technical data PLA2611:

Model	PLA2611
Low frequency driver	2 x 6,5" Neodymium lightweight drivers, mounted on separate 110° baffles.
High frequency driver	1"- throat exit driver, mounted on a waveguide.
Construction	self-powered, closed cabinet (bi-amped version upon request)
Sensitivity	97 dB@1W/1m.
Nominal impedance	Each component are 8 ohm.
Power handling R.M.S.	350W
Power Handling cont.	700W
Max SPL, open space (calc.)	127 @ 700W (139 dB 2 x 8 pcs in array)
frequency response +/- 6dB	80Hz - 20kHz
Vertical dispersion -6dB	15°
Horizontal dispersion -6dB	110°
Measurements H x W x D mm.	215/117 x 500 x 370
Weight	13,8 kg.
Recommended crossover in an active system with subwoofers	HP@90Hz, 48dB/oct
Recommended pre-programmed DSP processors	PROPHON DSP26, PROPHON DX48, PROPHON DSP48
Applications	- Fixed Installations. - Live performances. - 2-4 pcs stacked/mounted on subwoofers in a PA- system - Frontfill, delay,
Accessories	- Flightware for rigging, case,

## Extended Technical information , Amplifier, DSP and setup.

DSP Presets (Push preset select btn to change preset.)	FOUR DSP PRESETS 1) FLAT THROUGH 2) EXTENDED FULLRANGE 3) LINE ARRAY 1 4) LINE ARRAY 2	
Connections	Input: Neutrik XLR female Link out: Neutrik XLR male Power in: Neutrik powercon blue Power link: Neutrik powercon white	
Volume control	Stepped potentiometer, Mute to +6dB,	
LED barographs	Blue Green Yellow Red	Power on Signal Temp Limit
Mains Voltage Range	100 - 250 Vac (+-10%)	
Start-up Voltage	90 Vac (130Vac)	
Shutdown Voltage	250 Vac	
Minimum operation Voltage	70Vac	
Efficiency	>95% (typical)	
Damping factor	> 1000 (20Hz - 1kHz)	
Distortion	<0,005% (THD, DIM, SMPTE)	
Power	2 x 350W	
S/N ratio	<113 dBA (20Hz - 20kHz A weighted)	