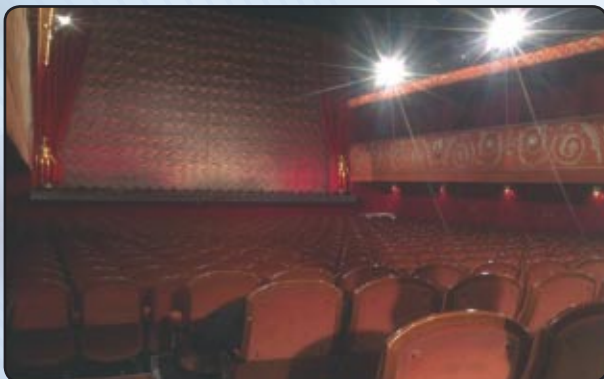


CLAM21041 (Column Linear Array Module)

Fixed installation line array module

PROPHON INSTALLATION SERIES



CLAM21041 (Column Linear Array Module)

Fixed installation line array module

PRESENTATION

The CLAM21041 is a line array module for fixed installations. The specially designed horn and wave guides flattens the sound waves to a perfectly non-delayed symmetrical wave front with a 100 x 15 dispersion pattern.

The bi-amplified construction allows for economical use of external amplifiers and DSP processors, *(available presets in all our processors and amplifiers with built-in dsp's)*

We have omitted all external features in the CLAM21041, to reduce manufacturing cost, so that the module can perform like the most expensive tour line arrays, but cost a fraction, the splay tilting hardware was designed to be easy to use, safe and economical.

Most hardwares for line arrays are designed for tour and rental applications, with versatility and "on-the-road" thinking, resulting in very expensive hardwares, usually costing as much as 20% of the actual speaker, this is of very little use in fixed installations. We have also looked into how line arrays often are installed, and the CLAM21041 are actually two line array modules in one cabinet, Each driver and woofer has a perfect alignment, resulting in a seamless linear wave front.

The cabinet were designed to be as shallow as possible (only 280 mm.) knowing that depth is often a problem when installing Line arrays.

Features:

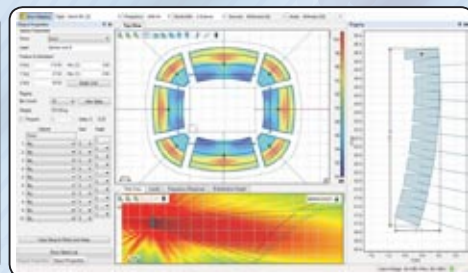
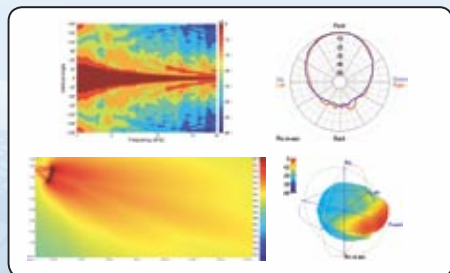
- 2 x 10" high power, custom woofers
- 4 x 1"-drivers mounted on separate wave guides and horns with a 100x15 dispersion pattern.
- Easy to install, with only one, multi usage, installation bracket for fixing splay angles.
- Available in the free Ease Focus 2 software, for acoustical calculations, simulations, predictions and presentations
- Controlled dispersion pattern of H100 x V15
- True line array coupling, with a typical -3dB / doubling of distance
- DSP presets available to download from our web site to all our processors and DSP amplifiers.
- Only 280 mm. in depth, for discreet installations.
- Fully covering perfored steel grille with speaker foam behind

Applications:

- Churches
- Multi arenas.
- Concert halls
- Football stadiums.
- Large live venues.
- Auditoriums
- Hockey rinks.
- Large nigh clubs.
- Large cinema theatres
- Theatres
- Conference centres
- Places of worship

TECHNICAL SPECIFICATIONS CLAM21041, LINE ARRAY MODULE

Model	CLAM21041
Speaker type	2-way, bi-amplified line array module for fixed installations
Components	LF: 2 x 10" woofers frontloaded bass reflex column arrayed HF: 4 x 1" drivers, mounted on seamless wave guides.
Power handling	LF: 400W RMS / 800W cont.. HF: 80W RMS / 160W cont..
Sensitivity	LF: 99dB, 1W/1m. (2x97 dB) HF: 113dB, 1W/1m. (4 x 107dB)
Max SPL (calc.)	Continuous, open space: 129dB Peak, 2Pi half space: 136,5dB
Impedance	LF: 2x8ohm (4ohm) HF: 4x8 ohm (2ohm)
Dispersion	H100 x V15
Frequency response	Array dependent, (1 module: 60-18kHz, -6dB)
Dimensions	H570 x W520 x D280
Weight	



The CLAM21041 are available in the EASE FOCUS 2 database for acoustical simulations, predictions and presentations, CLF-files are also available for down loading and importing into architectural construction- acoustic- and CAD- soft wares.